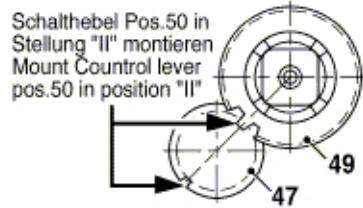
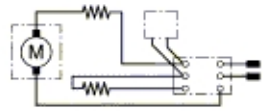


0 601 940 703

Issue } 08-04-25
Stand }

Fig./Abb. 1

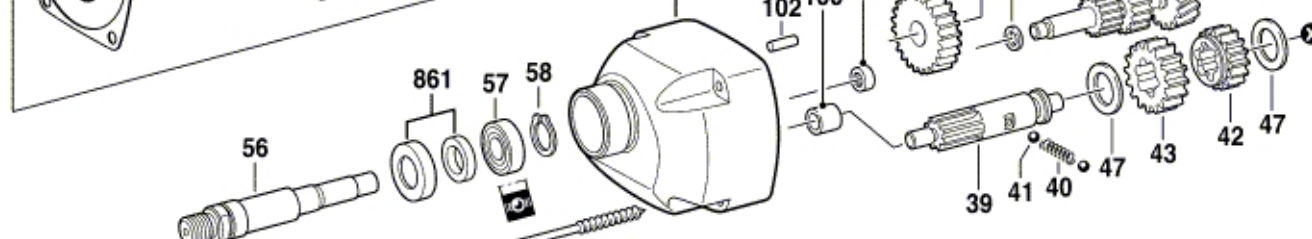
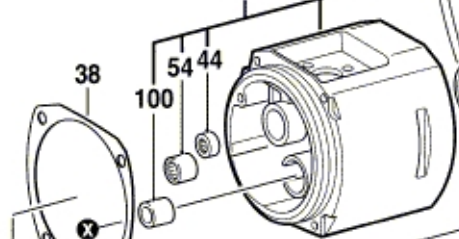
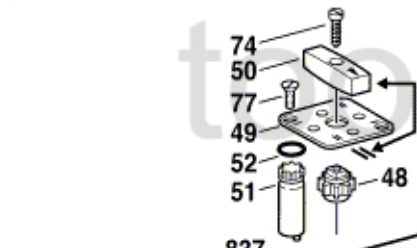


Schalthebel Pos.50 in Stellung "II" montieren
Mount Control lever pos.50 in position "II"
Einbauage beachten
Check installation position
Attention au positionnement
Téngase en cuenta la posición de montaje

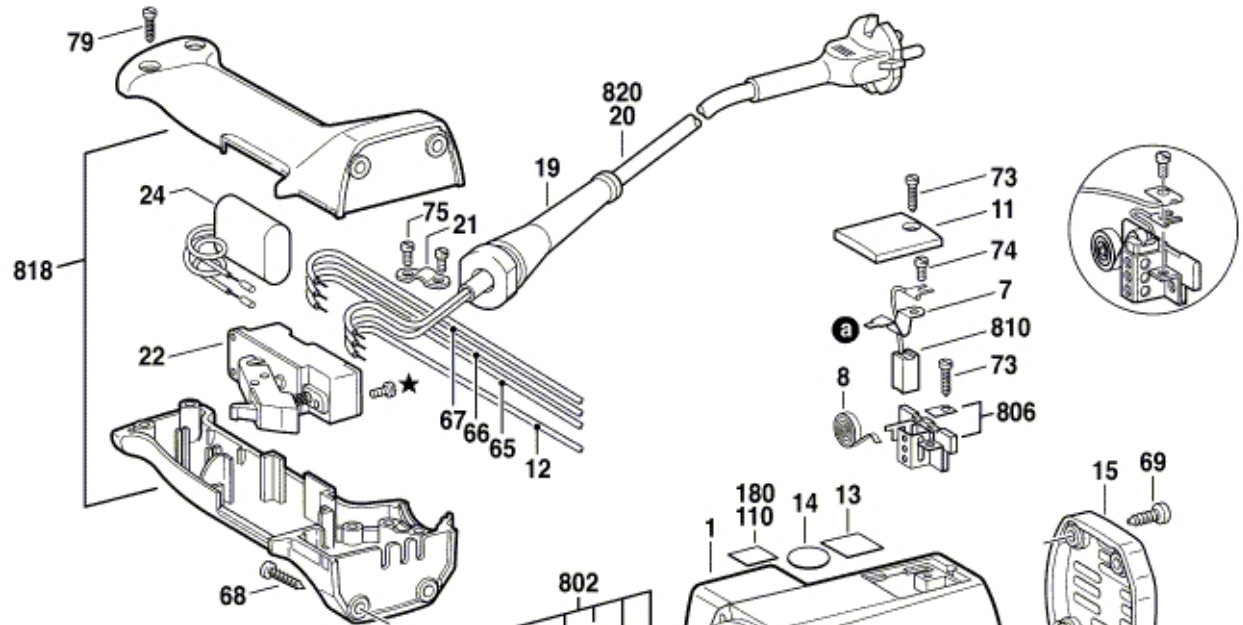
Alte Ausführung
Old execution
Ancien exécution
Vieja ejecución



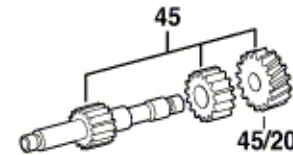
neu/new/nouveau/nuevo
alt/old/ancien/viejo



neu/new/nouveau/nuevo 71 — —
alt/old/ancien/viejo 71 — —



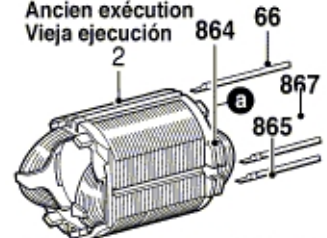
Alte Ausführung
Old execution
Ancien exécution
Vieja ejecución



★ mit Loctite 222 sichern
secure with Loctite 222

◇ mit Loctite 242 sichern
secure with Loctite 242

Alte Ausführung
Old execution
Ancien exécution
Vieja ejecución



Teile sind nicht mehr lieferbar!
Spare parts are not available!

Modifications reserved
Änderungen vorbehalten
Modifications réservées
Salvo modificaciones